

RUNNER MASJID AL AQSA[®] ALMIRA MOSQUE RUNNER



ALMIRA

HARGA ASAL

RM ~~350~~

HARGA PROMOSI

RM 275

SAIZ: 4 Kaki x 20 Kaki (1.2M x 6M)

KLASIFIKASI PRODUK

Surface : Level Cut Pile

Fibre : 100% BCF Duralox Olefin

Construction : Cut Pile Graphic

Thickness : +8MM

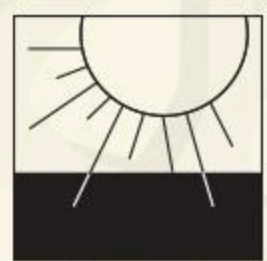
Roll Width : 4 Kaki x 20 Kaki (1.2M x 6M)

Smoke Density : Less than 450

Flammability : 8 passes

(ASTM D-2859-96 & CPSC FF-170)

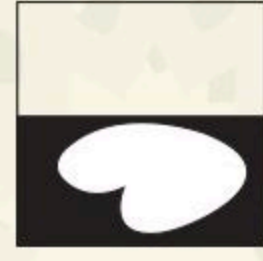
Suitability : Mosques Prayer Halls, Surau.



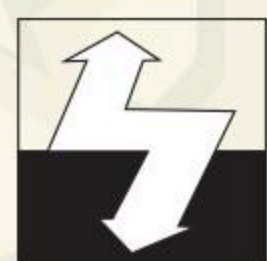
TAHAN PUDAR
AATCC 16E



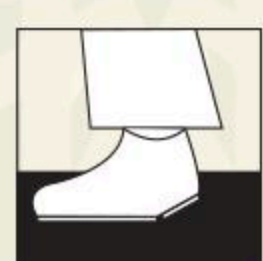
LAMBAT MEREBAK
ASTM D-2859-96
& CPSC FF-170
(Kadar ketahanan api)



TAHAN KOTORAN
AATCC 175-1993



CE MARKING EN 14041
EN 14041, EN 1815, EN 6356
(Kadar tahan elektrikal)



CE MARKING
EN 14041
EN 14041, EN 1815,
EN 6356
(Kadar tekanan)



ALMIRA GOLD



ALMIRA BLUE



ALMIRA MAROON



ALMIRA GREEN



ALMIRA CHILI RED

RUNNER MASJID AL AQSA® ARABIYAH HEATSET MOSQUE RUNNER (DOME DESIGN)



ARABIYAH

HARGA ASAL

RM ~~550~~

HARGA PROMOSI

RM 475

SAIZ: 4 Kaki x 20 Kaki (1.2M x 6M)

KLASIFIKASI PRODUK

Surface : Level Cut Pile

Tickness : +14MM

Roll Width : 4 Kaki x 20 Kaki (1.2M x 6M)

Flammability : Low Radius Effects

Light Fastness : 5-6

Water Resistance : 4-5

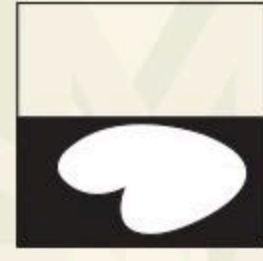
Suitability : Mosques Prayer Halls, Surau



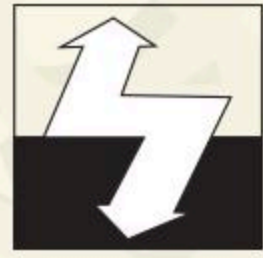
TAHAN PUDAR
AATCC 16E



LAMBAT MEREBAK
ASTM D-2859-96
& CPSC FF-170
(Kadar ketahanan api)



TAHAN KOTORAN
AATCC 175-1993



CE MARKING EN 14041
EN 14041, EN 1815, EN 6356
(Kadar tahan elektrikal)



CE MARKING
EN 14041
EN 14041, EN 1815,
EN 6356
(Kadar tekanan)



ARABIYAH BERBER



ARABIYAH GREEN



ARABIYAH RED



ARABIYAH BLUE

**RUNNER MASJID AL AQSA®
SHIRAZ HEATSET MOSQUE
RUNNER (PILLAR DESIGN)**



SHIRAZ

HARGA ASAL
RM ~~550~~

HARGA PROMOSI
RM 475

SAIZ: 4 Kaki x 20 Kaki (1.2M x 6M)

KLASIFIKASI PRODUK

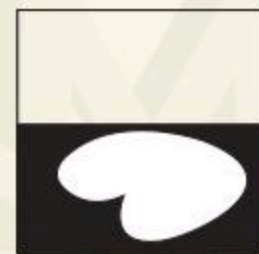
Surface : Level Cut Pile
Tickness : +12MM
Roll Width : 4 Kaki x 20 Kaki (1.2M x 6M)
Flammability : Low Radius Effects
Light Fastness : 5-6
Water Resistance : 4-5
Suitability : Mosques Prayer Halls, Surau



TAHAN PUDAR
AATCC 16E



LAMBAT MEREBAK
ASTM D-2859-96
& CPSC FF-170
(Kadar ketahanan api)



TAHAN KOTORAN
AATCC 175-1993



CE MARKING EN 14041
EN 14041, EN 1815, EN 6356
(Kadar tahan elektrikal)



CE MARKING EN 14041
EN 14041, EN 1815,
EN 6356
(Kadar tekanan)



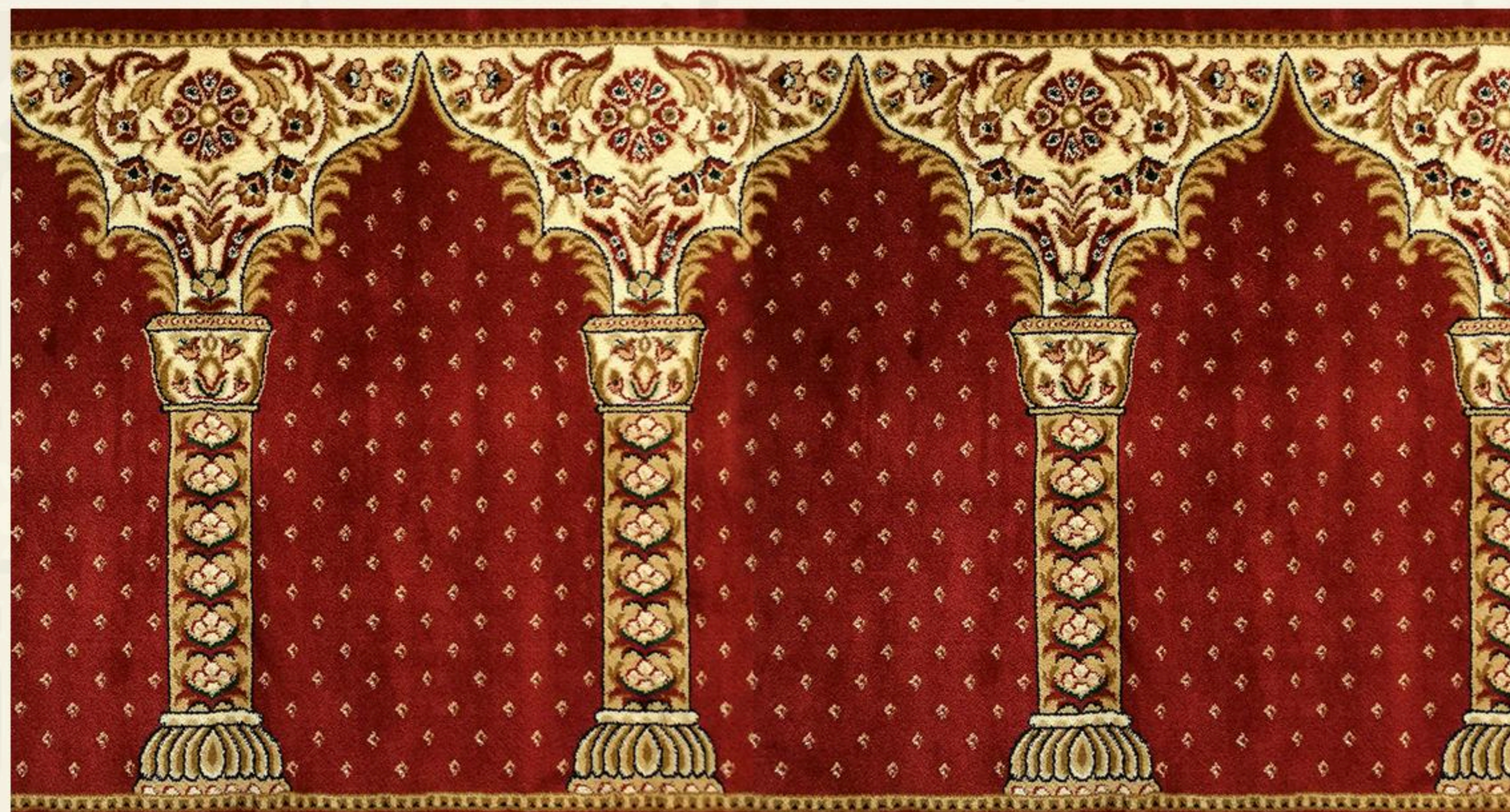
SHEERAZ PILLAR BLUE



SHEERAZ PILLAR BEIGE



SHEERAZ PILLAR GREEN



SHEERAZ PILLAR MAROON

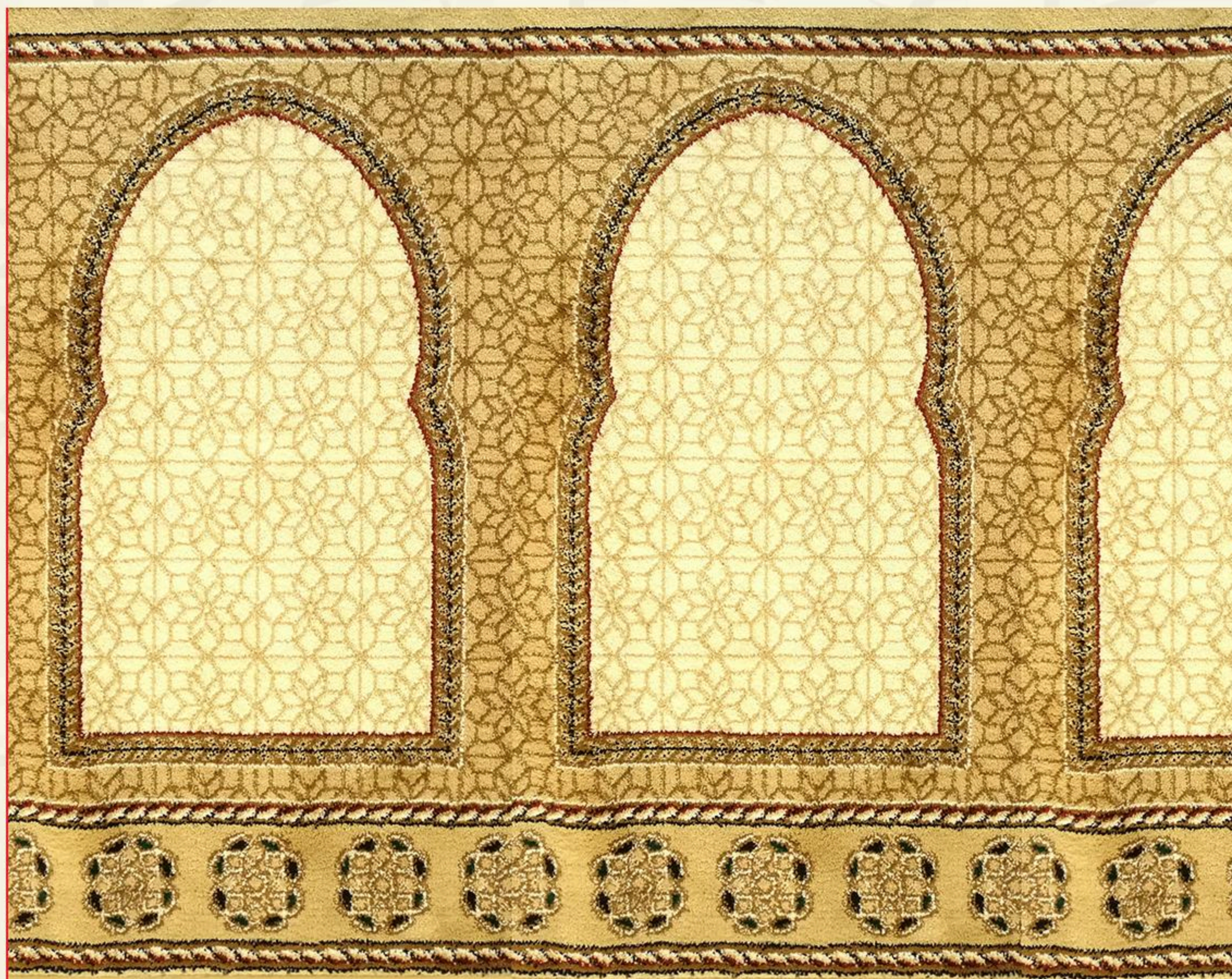
**RUNNER MASJID AL AQSA®
SHIRAZ HEATSET MOSQUE
RUNNER (DOME DESIGN)**



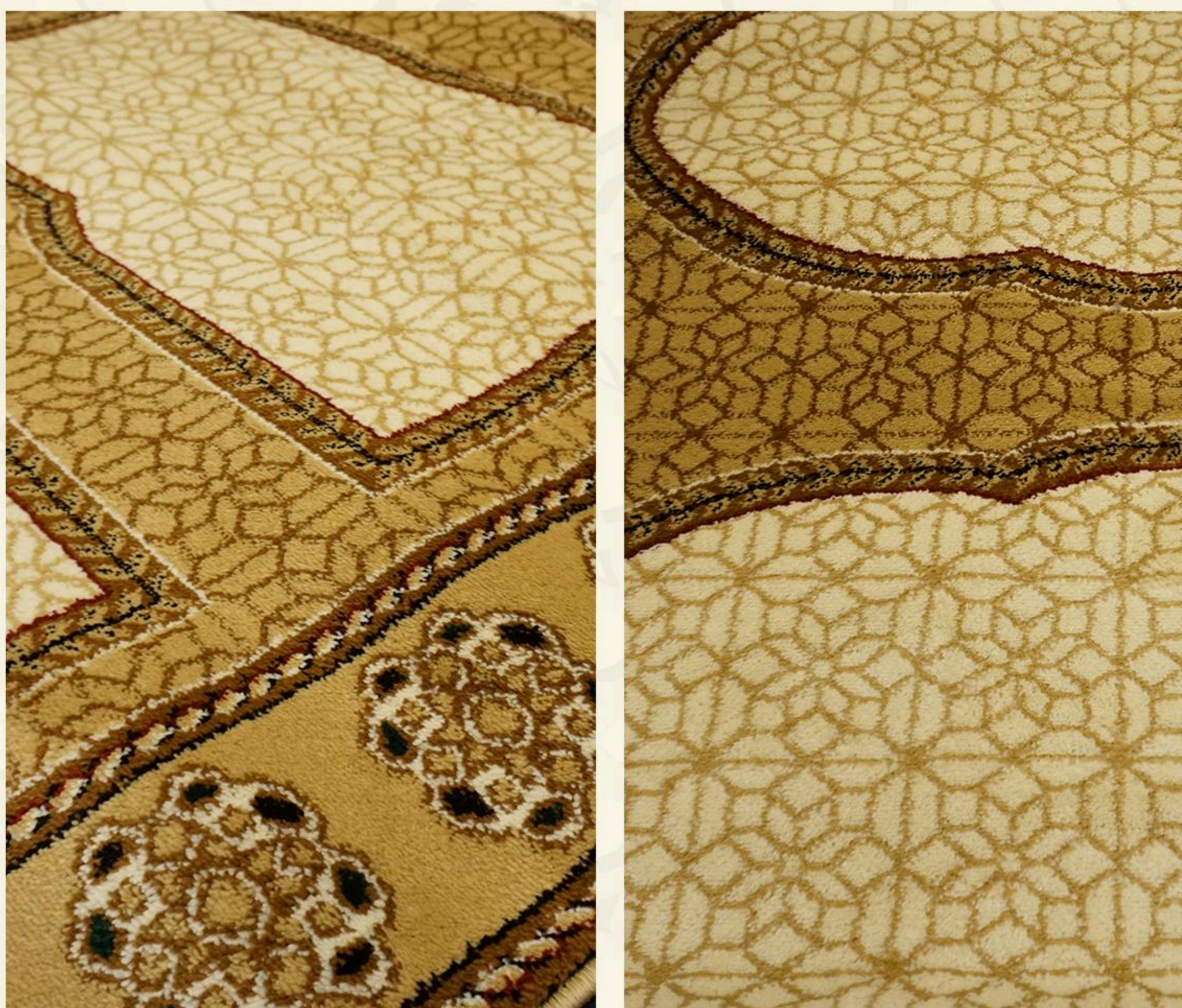
SHIRAZ

HARGA ASAL
~~RM 550~~
HARGA PROMOSI
RM 475

SAIZ: 4 Kaki x 20 Kaki (1.2M x 6M)



SHEERAZ BERBER



KLASIFIKASI PRODUK

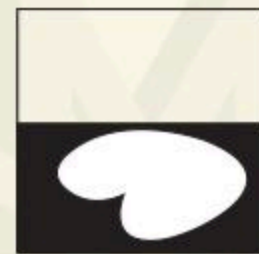
Surface : Level Cut Pile
Tickness : +-14MM
Roll Width : 4 Kaki x 20 Kaki (1.2M x 6M)
Flammability : Low Radius Effects
Light Fastness : 5-6
Water Resistance : 4-5
Suitability : Mosques Prayer Halls, Surau



TAHAN PUDAR
AATCC 16E



LAMBAT MEREBAK
ASTM D-2859-96
& CPSC FF-170
(Kadar ketahanan api)



TAHAN KOTORAN
AATCC 175-1993



CE MARKING EN 14041
EN 14041, EN 1815, EN 6356
(Kadar tahan elektrikal)



CE MARKING
EN 14041
EN 14041, EN 1815,
EN 6356
(Kadar tekanan)

RUNNER MASJID AL AQSA[®] ZAAAYANA HEATSET MOSQUE RUNNER



ZAAAYANA

HARGA ASAL

RM ~~850~~

HARGA PROMOSI

RM 690

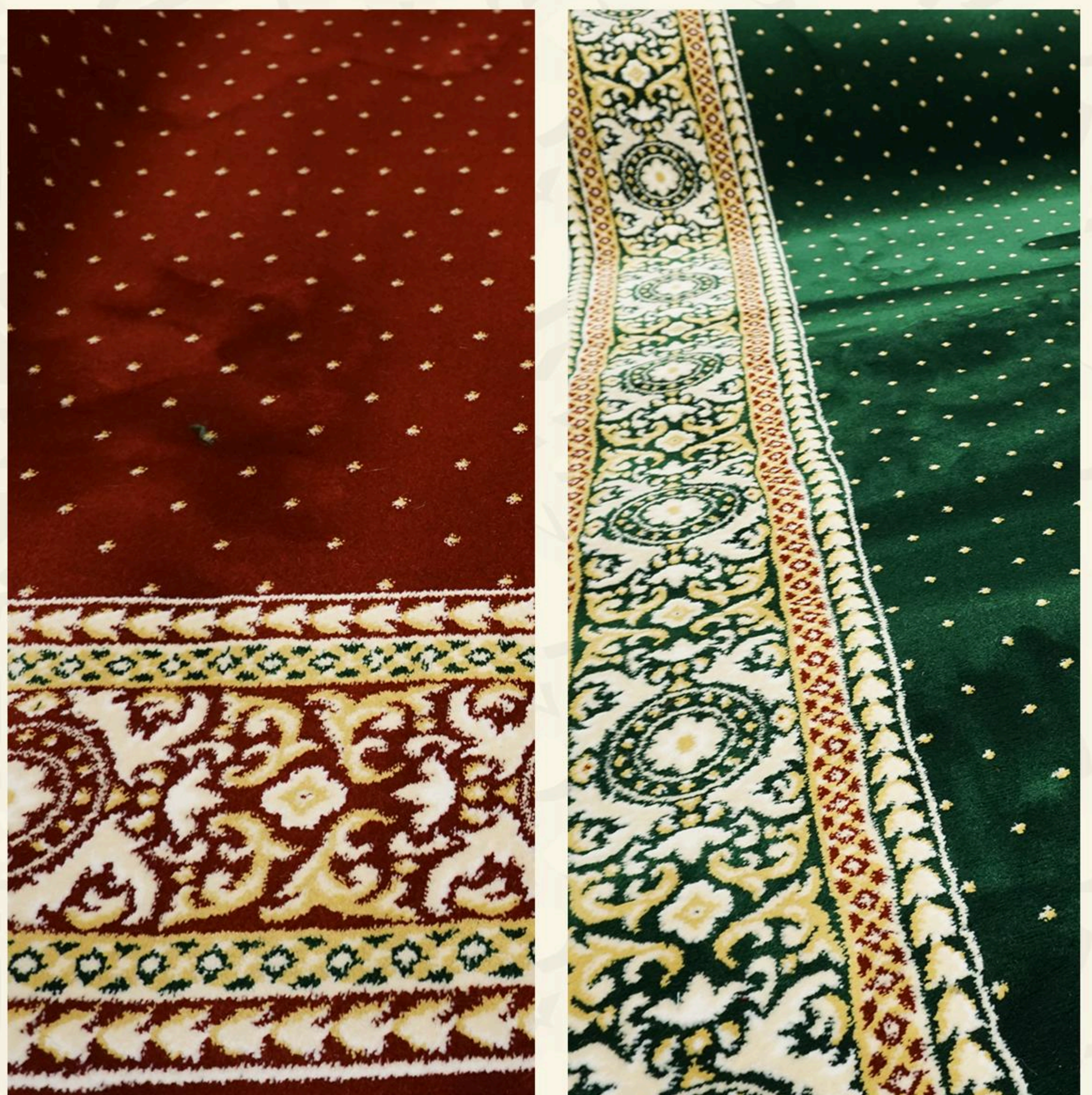
SAIZ: 4 Kaki x 20 Kaki (1.2M x 6M)



ZAAAYANA GREEN



ZAAAYANA MAROON



KLASIFIKASI PRODUK

Surface : Level Cut Pile
Pile Content : 100% Coiler Heatset Olefin
Pile Height : +14MM
Roll Width : 4 Kaki x 20 Kaki (1.2M x 6M)
Falammability : Low Radius Effects
Light Fastness : 5-6
Water Resistance : 4-5
Suitability : Mosques Prayer Halls, Surau.



TAHAN PUDAR
AATCC 16E



LAMBAT MEREBAK
ASTM D-2859-96
& CPSC FF-170
(Kadar ketahanan api)



TAHAN KOTORAN
AATCC 175-1993



CE MARKING EN 14041
EN 14041, EN 1815, EN 6356
(Kadar tahan elektrikal)



CE MARKING
EN 14041
EN 14041, EN 1815,
EN 6356
(Kadar tekanan)

**RUNNER MASJID AL AQSA®
ZEYTEEN HEATSET
MOSQUE RUNNER**



ZEYTEEN

HARGA ASAL

RM ~~850~~

HARGA PROMOSI

RM 690

SAIZ: 4 Kaki x 20 Kaki (1.2M x 6M)



ZEYTEEN GREEN



ZEYTEEN MAROON



KLASIFIKASI PRODUK

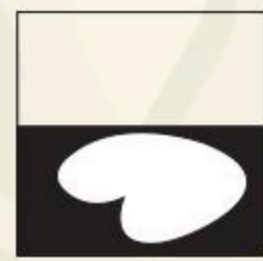
Surface : Level Cut Pile
Pile Content : 100% Coiler Heatset Olefin
Pile Height : +-14MM
Roll Width : 4 Kaki x 20 Kaki (1.2M x 6M)
Falammability : Low Radius Effects
Light Fastness : 5-6
Water Resistance : 4-5
Suitability : Mosques Prayer Halls, Surau.



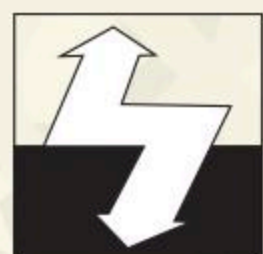
TAHAN PUDAR
AATCC 16E



LAMBAT MEREBAK
ASTM D-2859-96
& CPSC FF-170
(Kadar ketahanan api)



TAHAN KOTORAN
AATCC 175-1993



CE MARKING EN 14041
EN 14041, EN 1815, EN 6356
(Kadar tahan elektrikal)



CE MARKING
EN 14041
EN 14041, EN 1815,
EN 6356
(Kadar tekanan)

**RUNNER MASJID AL AQSA®
WESAVEYOU SAVE**



RUNNER KARPET MASJID (11 ORANG) **AL HARAMAIN AL AQSA®**

HARGA ASAL

~~RM1090~~

HARGA PROMOSI
BEKAL

RM900

SAIZ: 4' x 22' TEBAL: +-16MM

KLASIFIKASI PRODUK

Permukaan : Level Cut Pile

Jenis benang : Aqsa PP Heat Twisted
Double 100% Halal

Jumlah GSM² : 3200 GSM²

Jumlah Oz : 116 Oz

Ketebalan : +-16 MM

Lebar x Panjang : 1.2M x 6.7M (4' x 22') (Min 2 SET)

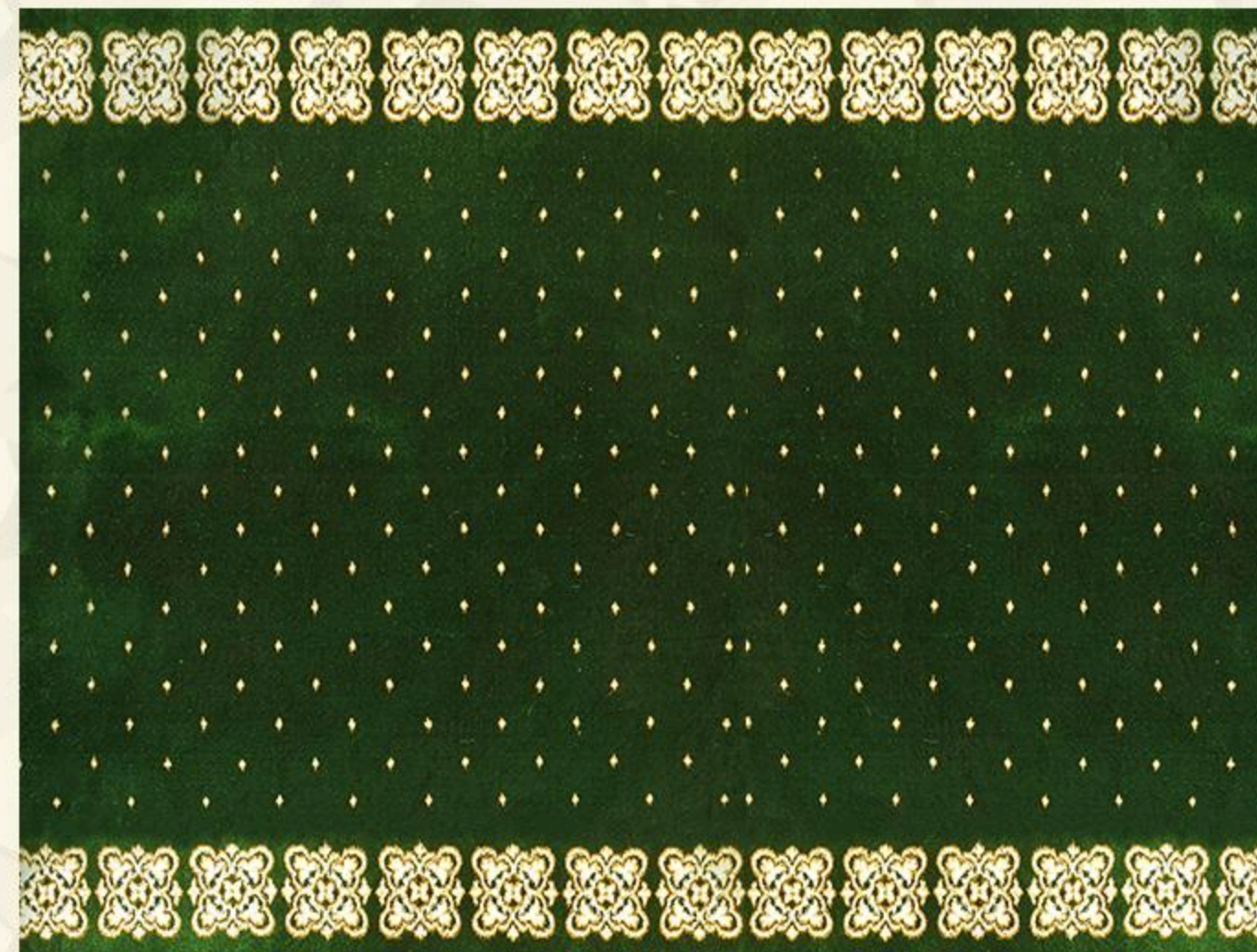
Kadar mudah terbakar : 5-6

Kadar ketahanan air : 4-5

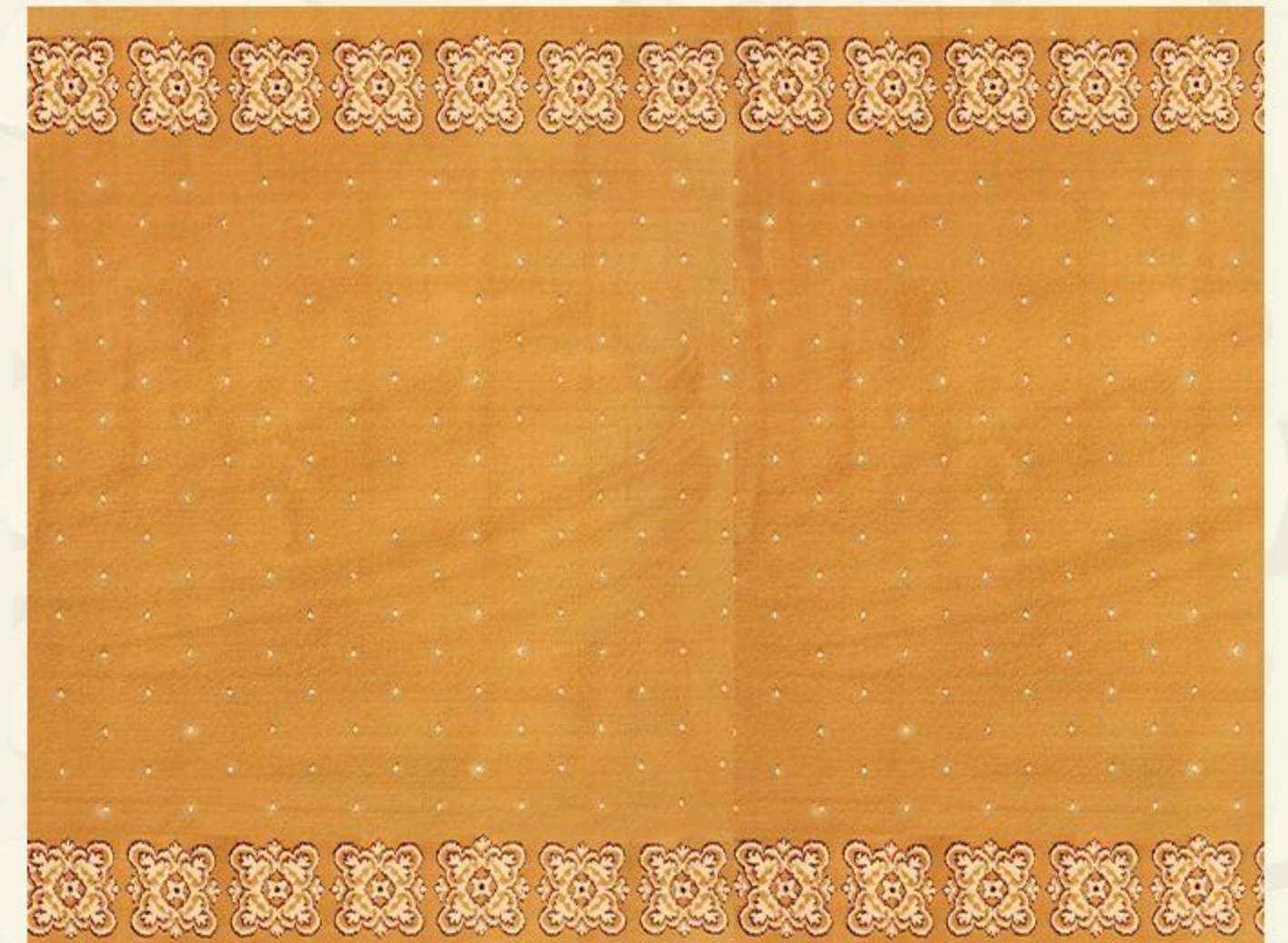
Kesesuaian : Masjid & Surau



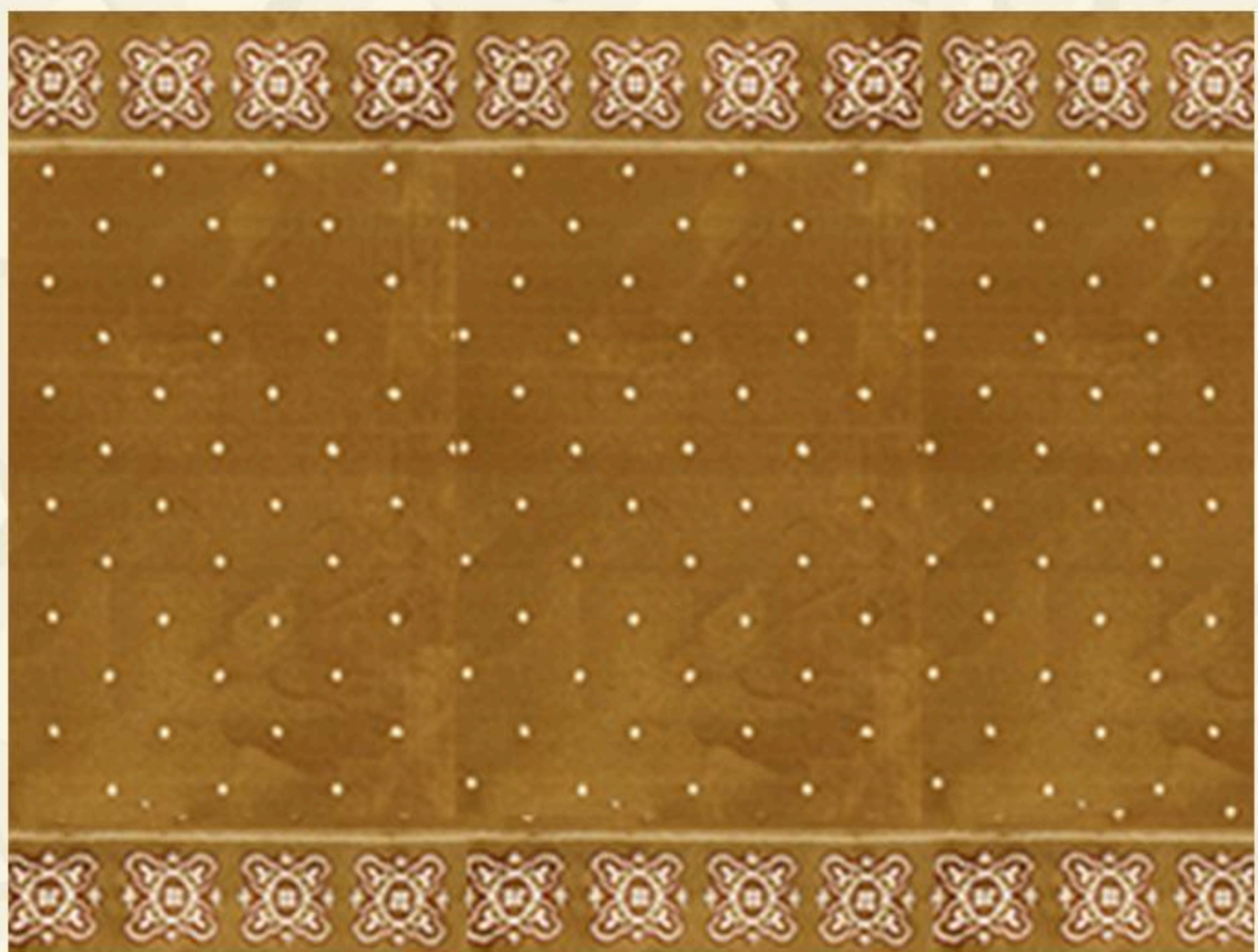
MERAH HARAMAIN



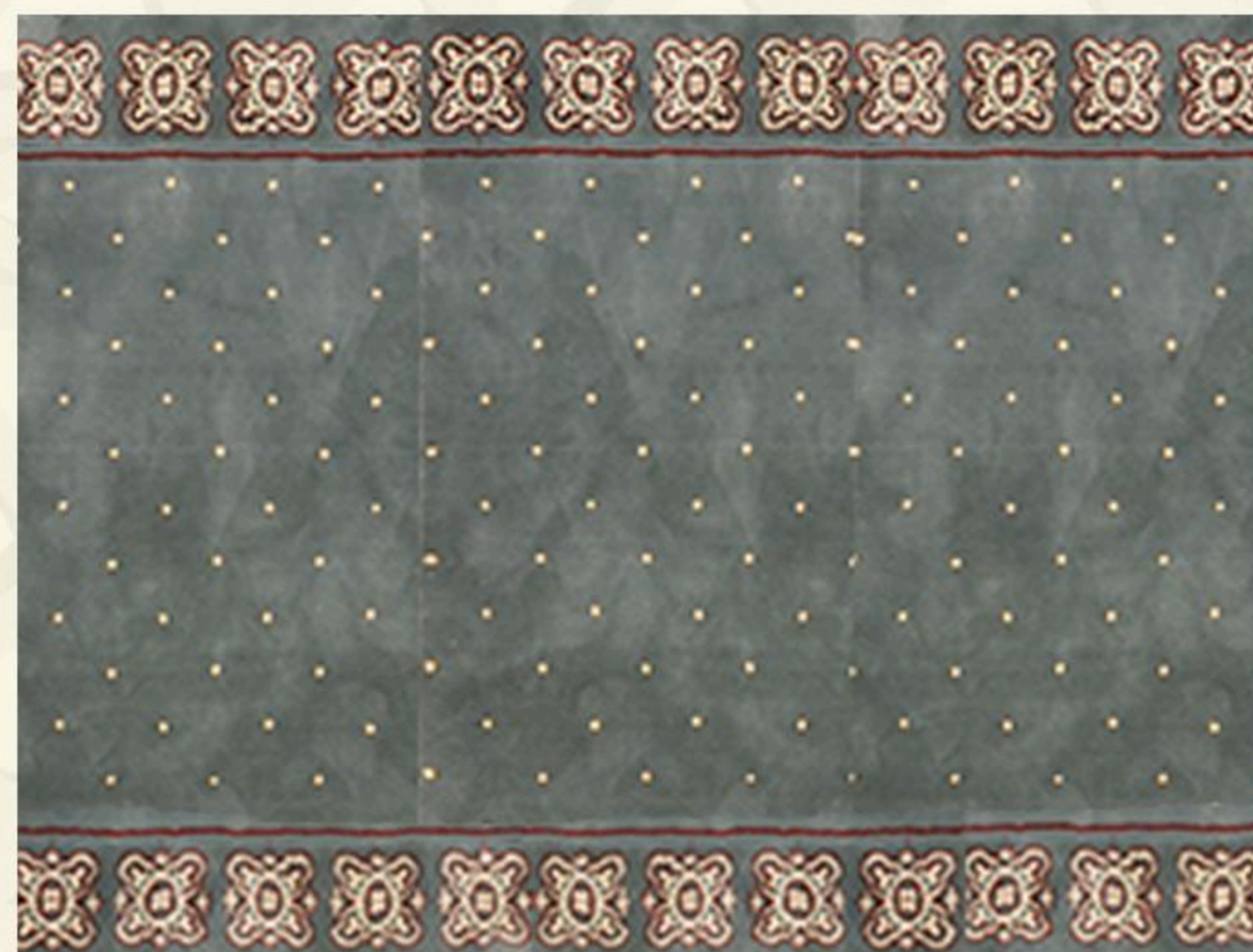
HIJAU HARAMAIN



KUNING EMAS HARAMAIN



EMAS HARAMAIN



BIRU HARAMAIN



AL RAUDAH HARAMAIN



ROSE GOLD HARAMAIN

**RUNNER MASJID AL AQSA®
WESAVEYOU SAVE**



RUNNER KARPET MASJID (11 ORANG) **AL ANWAR AL AQSA®**

HARGA ASAL

RM1090

HARGA PROMOSI
BEKAL

RM900

SAIZ: 4' x 22' TEBAL: +-16MM

KLASIFIKASI PRODUK

Permukaan : Level Cut Pile

Jenis benang : Aqsa PP Heat Twisted
Double 100% Halal

Jumlah GSM² : 3200 GSM²

Jumlah Oz : 116 Oz

Ketebalan : +-16 MM

Lebar x Panjang : 1.2M x 6.7M (4' x 22') (Min 2 SET)

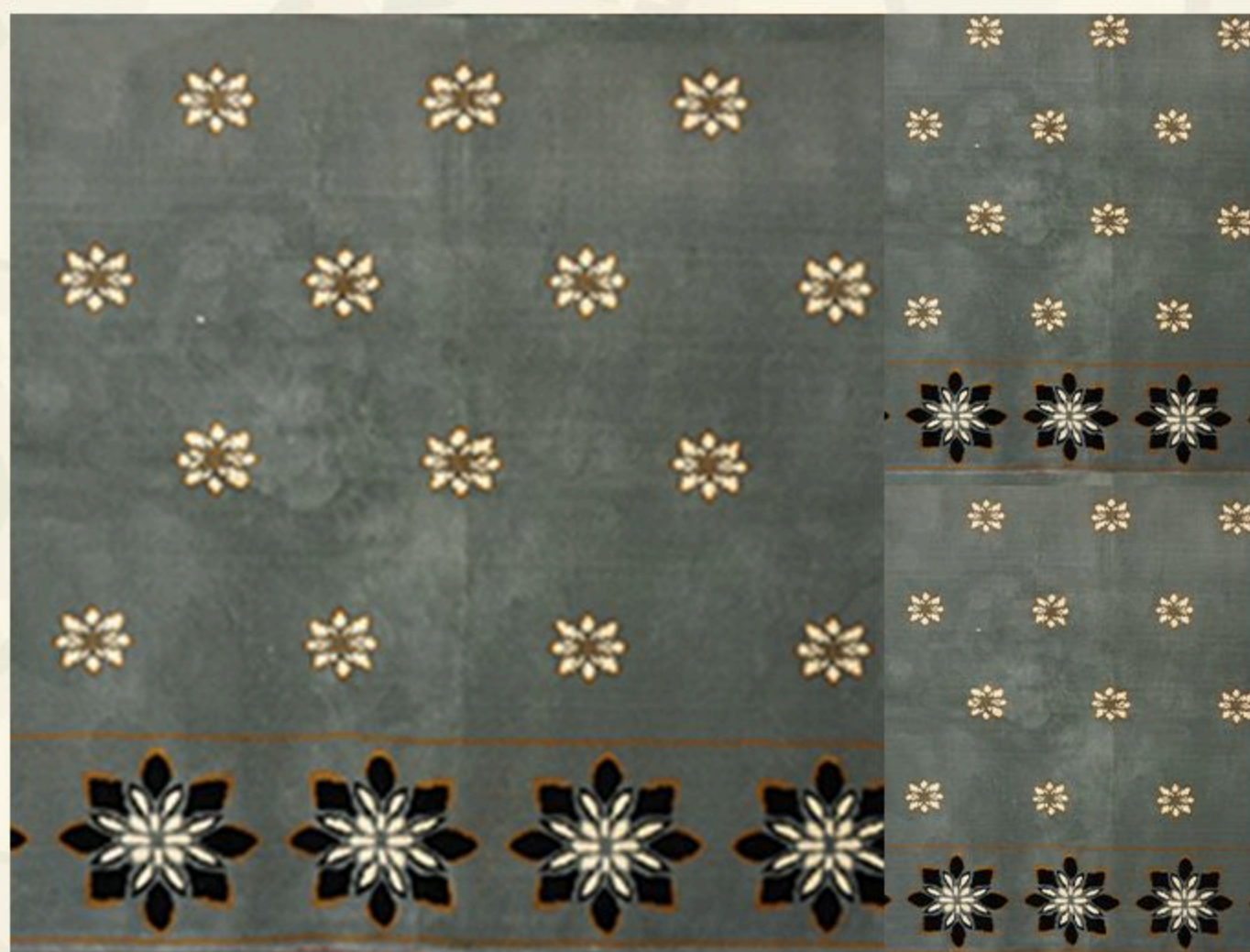
Kadar mudah terbakar : 5-6

Kadar ketahanan air : 4-5

Kesesuaian : Masjid & Surau



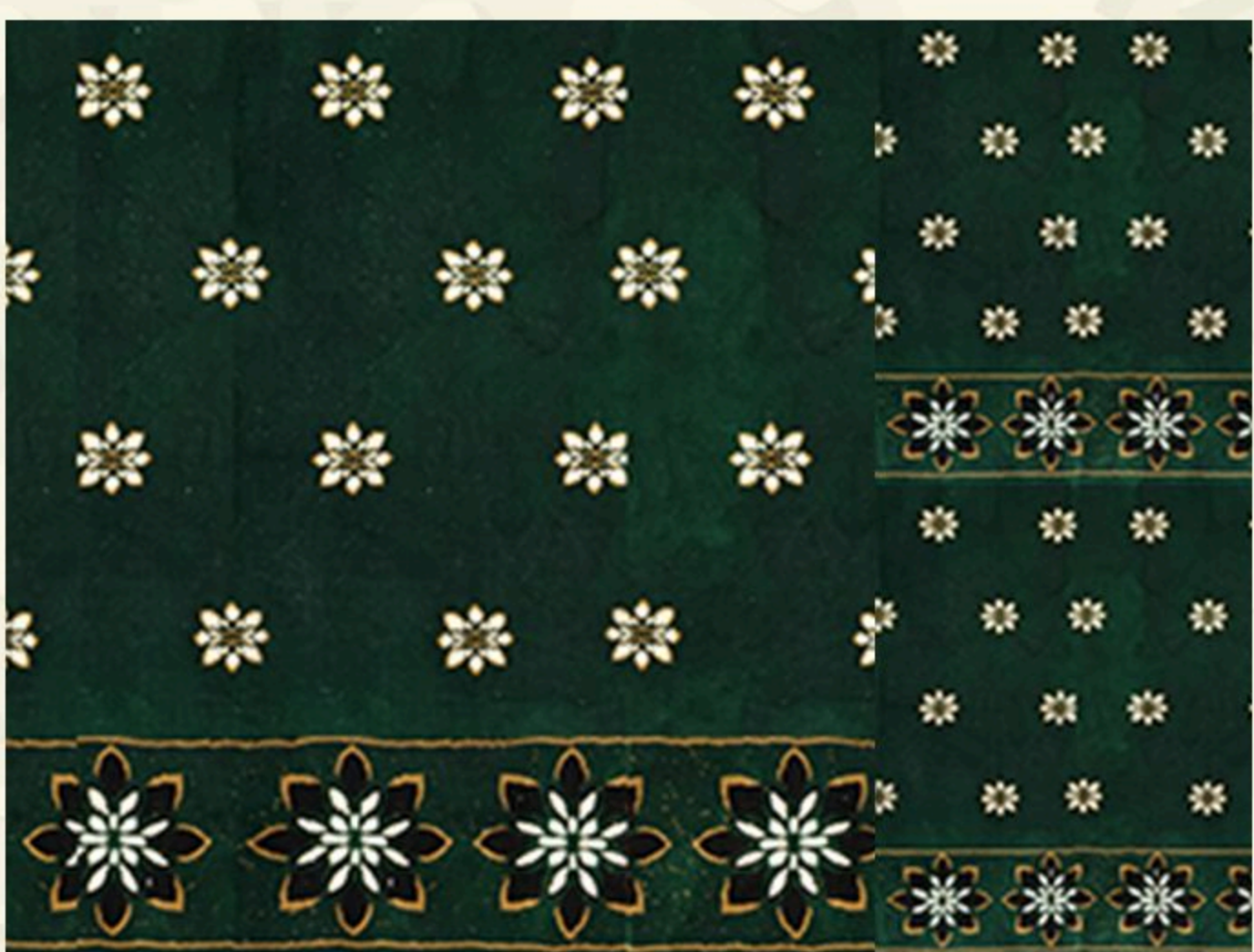
MERAH QALBI ANWAR



BIRU BAHRAIN ANWAR



EMAS ZAHABI ANWAR



HIJAU JANNAH ANWAR



ROSE GOLD ANWAR



AL RAUDAH ANWAR

RUNNER & KARPET MASJID AL AQSA® AL DINNAR HEATSET MOSQUE RUNNER



AL DINNAR



AL DINNAR MAROON



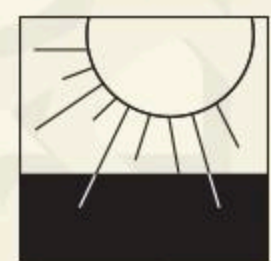
AL DINNAR GREEN

HARGA ASAL
~~RM 1050~~
HARGA PROMOSI
RM 900

SAIZ: 120CM x 600CM (3.9F x 19.6F)

KLASIFIKASI PRODUK

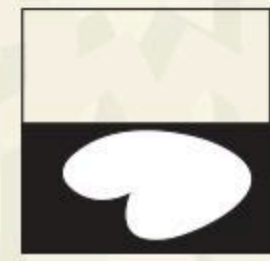
Surface : Level Cut Pile
Pile Content : 100% Coiler Heatset Olefin
Pile Height : +14MM
Roll Width : 120CM x 600CM (3.9F x 19.6F)
Flammability : Low Radius Effects
Light Fastness : 5-6
Water Resistance : 4-5
Suitability : Mosques Prayer Halls, Surau.



TAHAN PUDAR
AATCC 16E



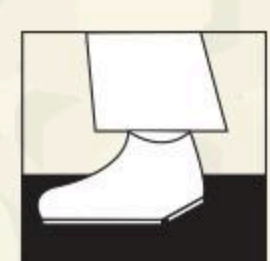
LAMBAT MEREBAK
ASTM D-2859-96
& CPSC FF-170
(Kadar ketahanan api)



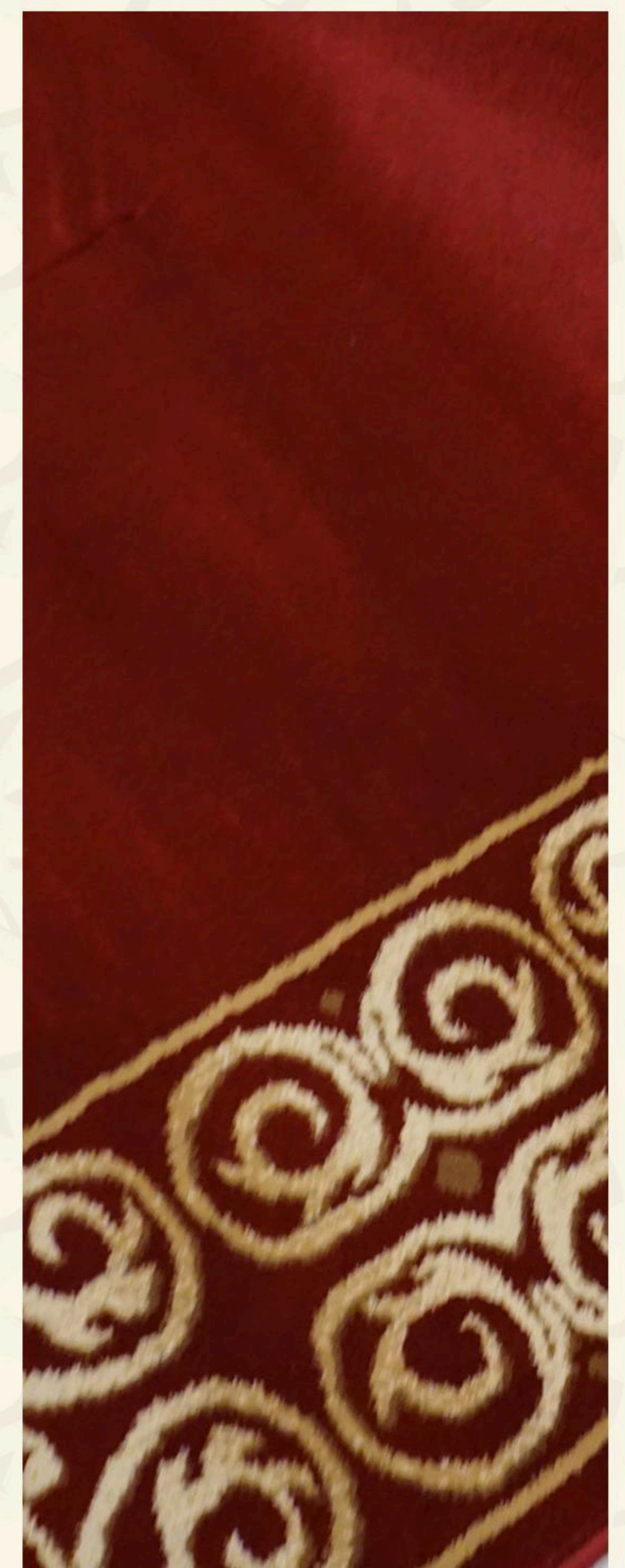
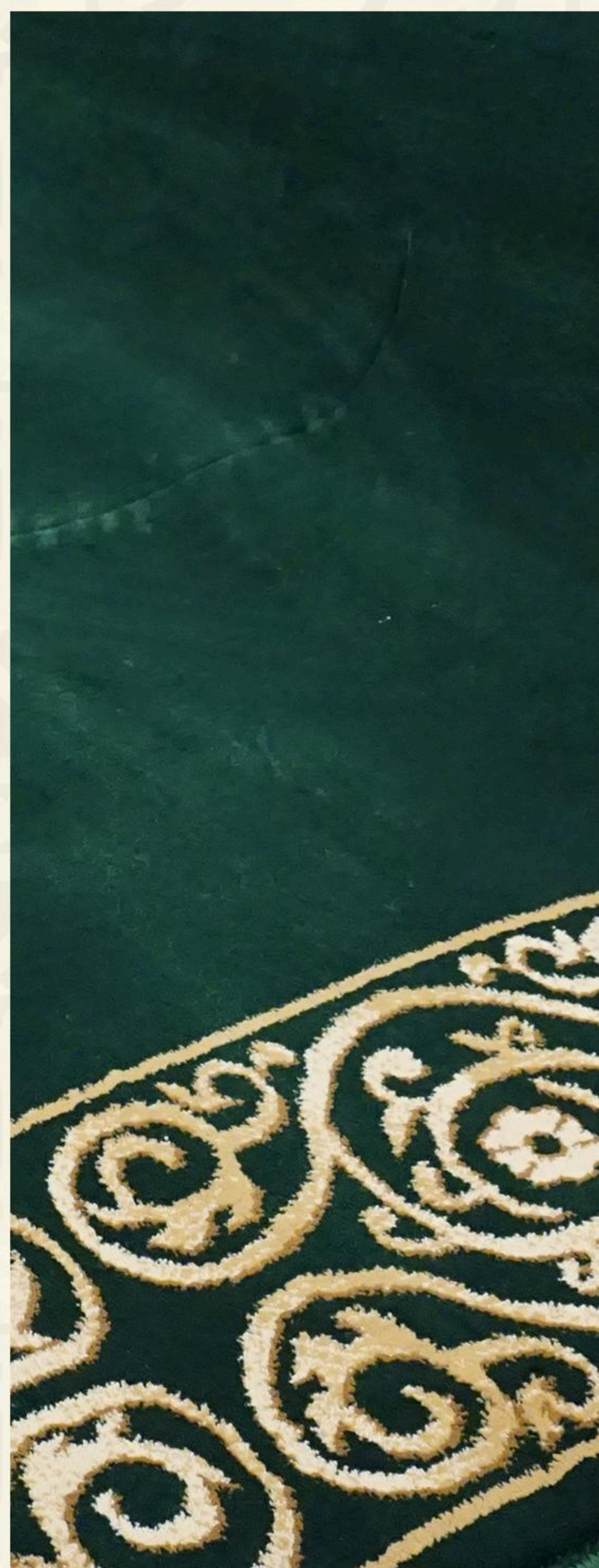
TAHAN KOTORAN
AATCC 175-1993



CE MARKING EN 14041
EN 14041, EN 1815, EN 6356
(Kadar tahan elektrikal)



CE MARKING EN 14041
EN 14041, EN 1815,
EN 6356
(Kadar tekanan)



RUNNER MASJID AL AQSA[®] PICASSO HEATSET MOSQUE RUNNER (SMALL PILLAR)



PICASSO

HARGA ASAL

RM ~~1050~~

HARGA PROMOSI

RM 900

SAIZ: 4 Kaki x 20 Kaki (1.2M x 6M)

KLASIFIKASI PRODUK

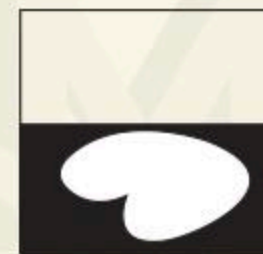
Surface : Level Cut Pile
Pile Content : 100% Coiler Heatset Olefin
Pile Height : +-12MM
Roll Width : 4 Kaki x 20 Kaki (1.2M x 6M)
Falamability : Low Radius Effects
Light Fastness : 5-6
Water Resistance : 4-5
Suitability : Mosques Prayer Halls, Surau.



TAHAN PUDAR
AATCC 16E



LAMBAT MEREBAK
ASTM D-2859-96
& CPSC FF-170
(Kadar ketahanan api)



TAHAN KOTORAN
AATCC 175-1993



CE MARKING EN 14041
EN 14041, EN 1815, EN 6356
(Kadar tahan elektrikal)



CE MARKING
EN 14041
EN 14041, EN 1815,
EN 6356
(Kadar tekanan)



PICASSO BERBER



PICASSO CHILL RED



PICASSO GREEN